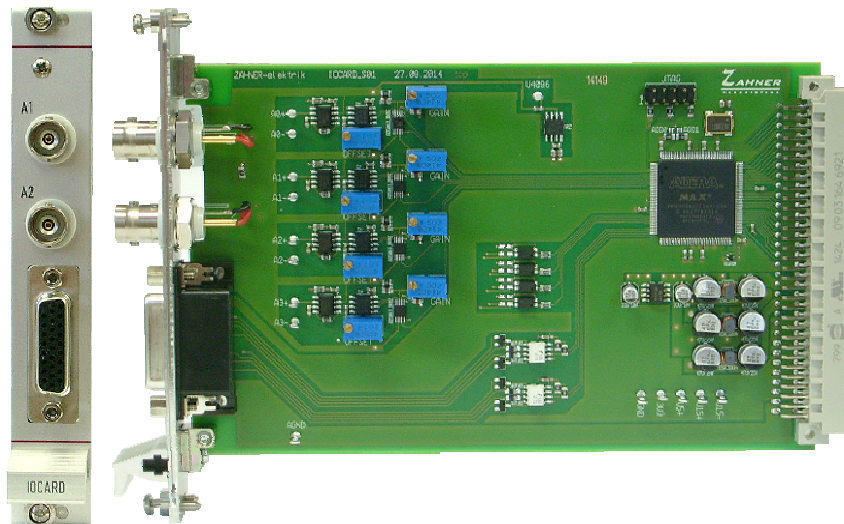


MIO

Analog Output Extension Board with Digital I/Os

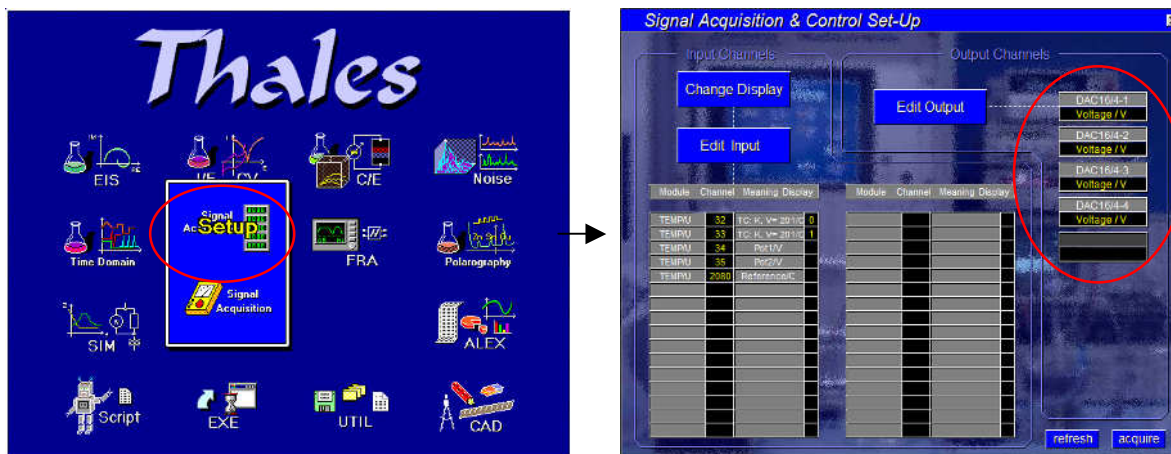


MIO is a member of the extension board family available for the Zahner Electrochemical Workstations. It allows to output up to four analog signals with a resolution of 16 bit and an output voltage range of ± 10 V.

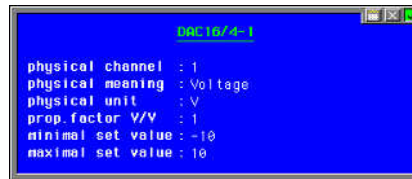
Additionally the *MIO* provides four digital inputs and four isolated output channels.

Up to four *MIO* addon cards can be addressed by the Thales software so that 16 analog output channels can be handled.

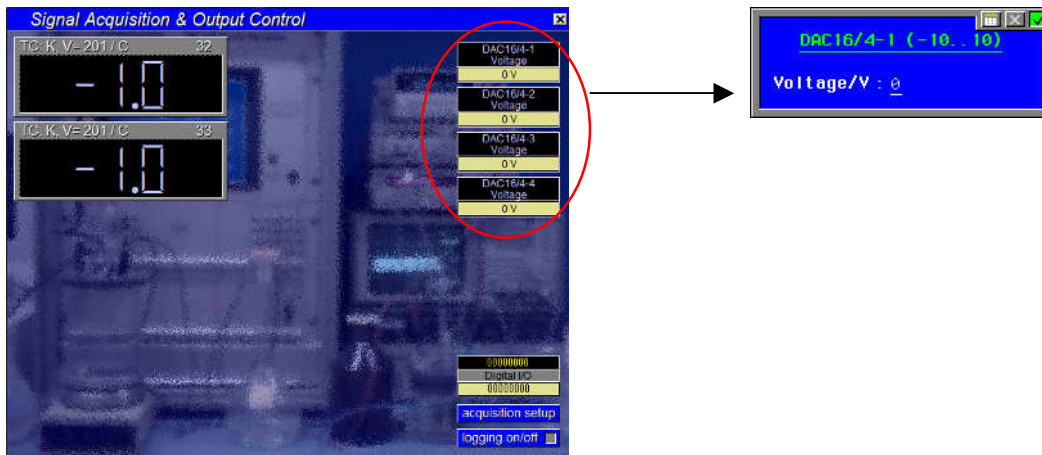
The *MIO* channels are configured from the Thales software directly. Point with the mouse cursor on the *Signal Acq.* -> *Setup* Icon to open the *Signal Acquisition Setup* page.



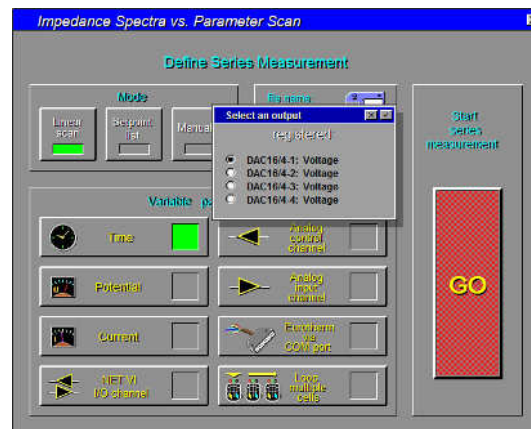
Here you input the “physical meaning”, the “physical unit”, and the “proportionality factor” for each output channel.



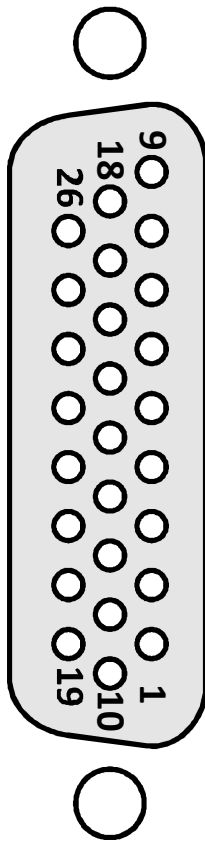
On the *Signal Acquisition & Output Control* page you enter the voltages to be output.



On the *Impedance Spectra vs. Parameter Scan* page you can select an analog control channel for EIS series measurements.



Pin Assignment SUB-D HD26



- 1 digital input #4 +
- 2 digital input #4 -
- 3 digital input #3 +
- 4 digital input #3 -
- 5 digital input #2 +
- 6 digital input #2 -
- 7 digital input #1 +
- 8 digital input #1 -
- 9 GND
- 10 digital output #4 +
- 11 digital output #4 -
- 12 digital output #3 +
- 13 digital output #3 -
- 14 digital output #2 +
- 15 digital output #2 -
- 16 digital output #1 +
- 17 digital output #1 -
- 18 GND
- 19 analog output #4 +
- 20 analog output #4 -
- 21 analog output #3 +
- 22 analog output #3 -
- 23 analog output #2 +
- 24 analog output #2 -
- 25 analog output #1 +
- 26 analog output #1 -

Technical Specifications

Card type	IM6/Zennium extension slot card
Number of analog output channels	4
Analog output range	±10 V
Resolution	16 bit
Number of digital input channels	4
Number of digital output channels	4
Digital output type	isolated (photo relais with 300 mA _{max})